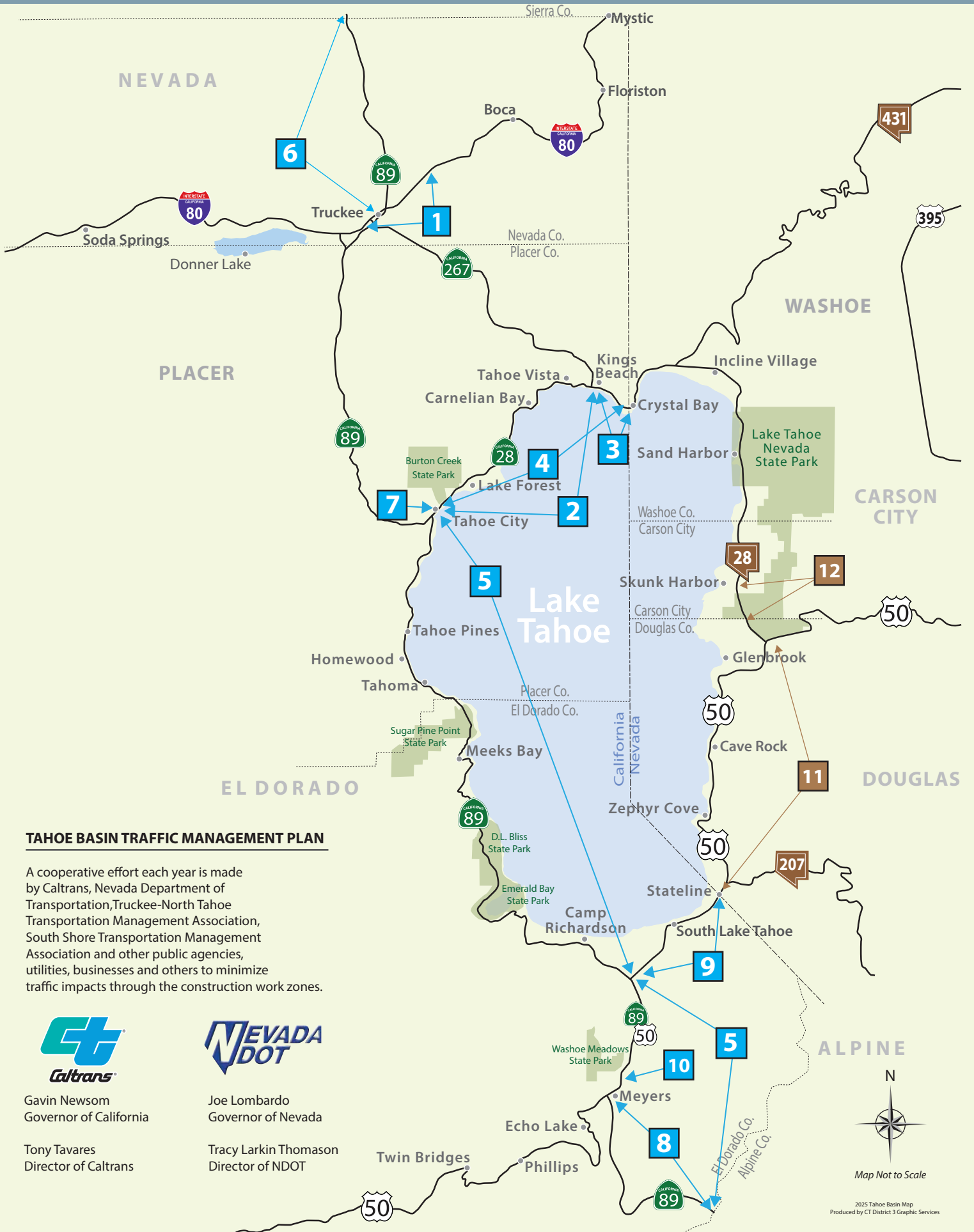


2025 TRUCKEE/LAKE TAHOE BASIN CONSTRUCTION PROJECTS



2025 TRUCKEE/LAKE TAHOE BASIN CONSTRUCTION PROJECTS



INTERSTATE 80

- 1** **Where:** NEV 80 PM 16.3 – 18.8, State Route 267/89N to state Agricultural Inspection Station
What: Westbound Interstate 80 Restriping Project
When: May-July
Expected Delays: Various lane closures with delays up to 20 minutes



STATE ROUTE 28

28

- 2** **Where:** PLA 28 PM 0.085 – 9.34, Tahoe City to State Route 267 junction
What: Middle Mile Broadband Network (MMBN) project
When: April – August
Expected Delays: One-way traffic control at multiple locations with delays up to 30 minutes
- 3** **Where:** PLA 28 PM 9.34 – 11, State Route 267 junction to Nevada state line
What: Middle Mile Broadband Network (MMBN) project
When: May – August
Expected Delays: One-way traffic control at multiple locations with delays up to 30 minutes
- 4** **Where:** PLA 28 PM 0.085 - 11, Tahoe City to Nevada state line
What: Pavement Rehabilitation Project
When: May – September
Expected Delays: One-way traffic control at multiple locations with total delays up to 30 minutes
- 12** **Where:** SR 28 from MP CC 0.41 to MP CC 3.87
What: Trench and install new sewer line with paving
When: May – November
Expected Delays: 24-hour lane closures with delays up to 30 mins



STATE ROUTE 89

- 5** **Where:** ED 50, ED 89, PLA 89 PM VAR, from the Alpine County line to Tahoe City
What: Middle Mile Broadband Network (MMBN) project
When: April – November, 2025 and 2026
Expected Delays: One-way traffic control at multiple locations with total delays up to 30 minutes
- 6** **Where:** NEV, SIE 89 PM from PM R0.530 in Nevada County to PM 29.584 in Sierra County
What: Middle Mile Broadband Network (MMBN) project
When: April – November, 2025 and 2026
Expected Delays: One-way traffic control at multiple locations with total delays up to 30 minutes



STATE ROUTE 89

- 7** **Where:** PLA 89 at Tahoe City
What: Fanny Bridge replacement project
When: May – November
Expected Delays: Traffic will shift to the State Route 89/West Lake Boulevard bypass to connect with State Route 28
- 8** **Where:** ED 89 from the Alpine County line to Meyers
What: Pavement Rehabilitation Project
When: August - October
Expected Delays: One-way traffic control at multiple locations with total delays up to 30 minutes



U.S. HIGHWAY 50

- 9** **Where:** US 50, El Dorado County, PM 75.4 – 80, State Route 89 "Y" to Pioneer Trail (north) through South Lake Tahoe
What: Lighting and Safety Project
When: April - October
Expected Delays: Possible delays of up to 5 minutes during peak periods
- 10** **Where:** US 50, El Dorado County, PM 71.33 – 71.60
What: Pioneer Trail at US 50 Roundabout Project (Meyers)
When: April - October
Expected Delays: One-way traffic control with delays up to 30 minute
- 11** **Where:** US 50, from the CA/NV Stateline to Kings Canyon Road, MP DO 0.00 to MP DO 13.26
What: Mill and overlay with ITS, hydraulic and safety improvements
When: May – October, 2025 and 2026
Expected Delays: Various lane closures with delays up to 10 mins

PROJECT INFORMATION CONTACTS

NDOT | www.dot.nv.gov | [@nevadadot](https://twitter.com/nevadadot) | [facebook](https://www.facebook.com/nevadadot) | **NevadaDOT**
 Meg Ragonese | (775) 888-7777 | Public Information Officer
mragonese@dot.nv.gov

Joe Lombardo, Governor of Nevada
Tracy Larkin Thomason, NDOT Director

CALTRANS | <https://dot.ca.gov/caltrans-near-me/district-3>

[@CaltransDist3](https://twitter.com/CaltransDist3) | [facebook](https://www.facebook.com/CaltransDistrict3) | **CaltransDistrict3**
Jeremy Linder | (530) 701-5209 | Public Information Officer
 (Placer, Nevada and Sierra counties) jeremy.linder@dot.ca.gov
John O'Connell | (530) 701-9459 | Public Information Officer
 (El Dorado County and Tahoe Basin) john.oconnell@dot.ca.gov
Gavin Newsom, Governor of California
Tony Tavares, Caltrans Director

